

[SDK Easy Usage]:

1. Decompress SDK

- RT288x_SDK
- Uboot

```
$ tar -jxvf Ralink_ApSoC_SDK_3530_20110331.tar.bz2
```

2. Decompress wifi driver:

- RT3052/RT3883/RT3352/RT5350

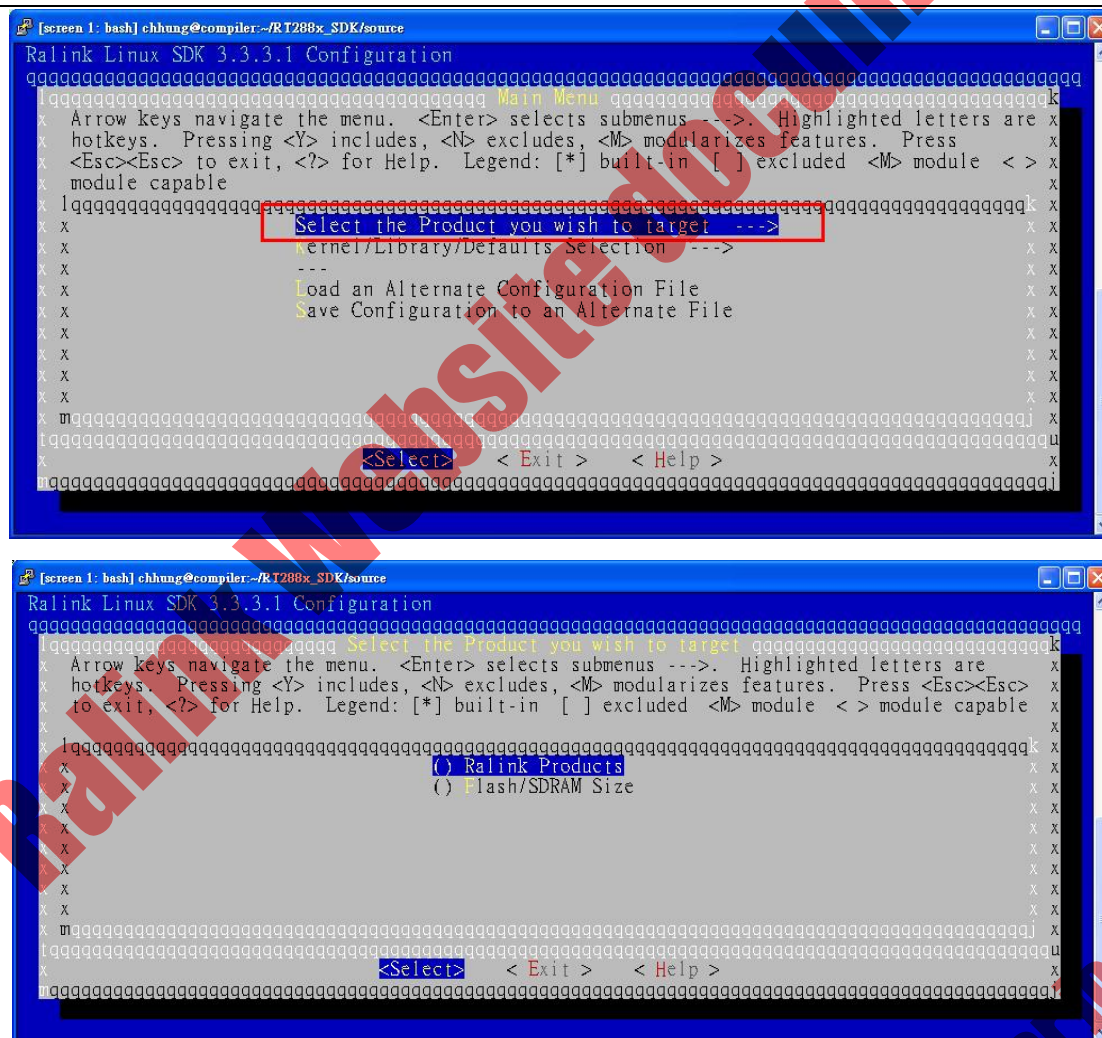
```
$ tar -jxvf wifi_driver.tar.bz2 -C RT288x_SDK/source/linux-2.6.21.x/drivers/net/wireless
$ vi RT288x_SDK/source/linux-2.6.21.x/ralink/Kconfig
source "drivers/net/wireless/rt2860v2_ap/Kconfig"
source "drivers/net/wireless/rt2860v2_sta/Kconfig"
```

- RT2880

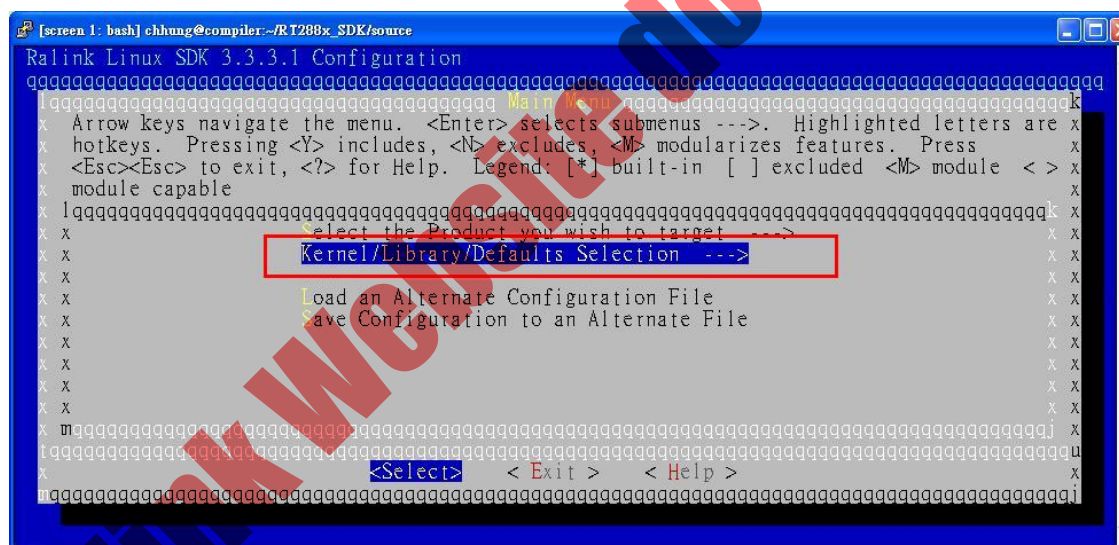
```
$ tar -jxvf wifi_driver.tar.bz2 -C RT288x_SDK/source/linux-2.4.x/drivers/net/wireless
```

3. Compile SDK:

```
$ cd RT288x_SDK/source
$ make menuconfig
```



<Exit>



```
Ralink Linux SDK Configuration

Kernel/Library/Defaults Selection
Arrow keys navigate the menu. <Enter> selects submenus ---. Highlighted letters are
hotkeys. Pressing <Y> includes, <N> excludes, <M> modularizes features. Press
<Esc><Esc> to exit, <?> for Help. Legend: [*] built-in [ ] excluded <M> module <>
module capable

Cross Compiler Path: "/opt/buildroot-gcc342/bin"

---
[*] Default all settings (lose changes)
[ ] Customize Kernel Settings
[ ] Customize Vendor/User Settings
[ ] Customize Busybox Settings
[ ] Customize uClibc Settings
[ ] Customize uClibc++ Settings
[ ] Update Default Vendor Settings

<Select> <Exit> <Help>
```

<Exit>

<Exit>

<Yes>

```
$ make dep
$ make
```

4. Detailed information, please refer the documents under RT288x_SDK/doc